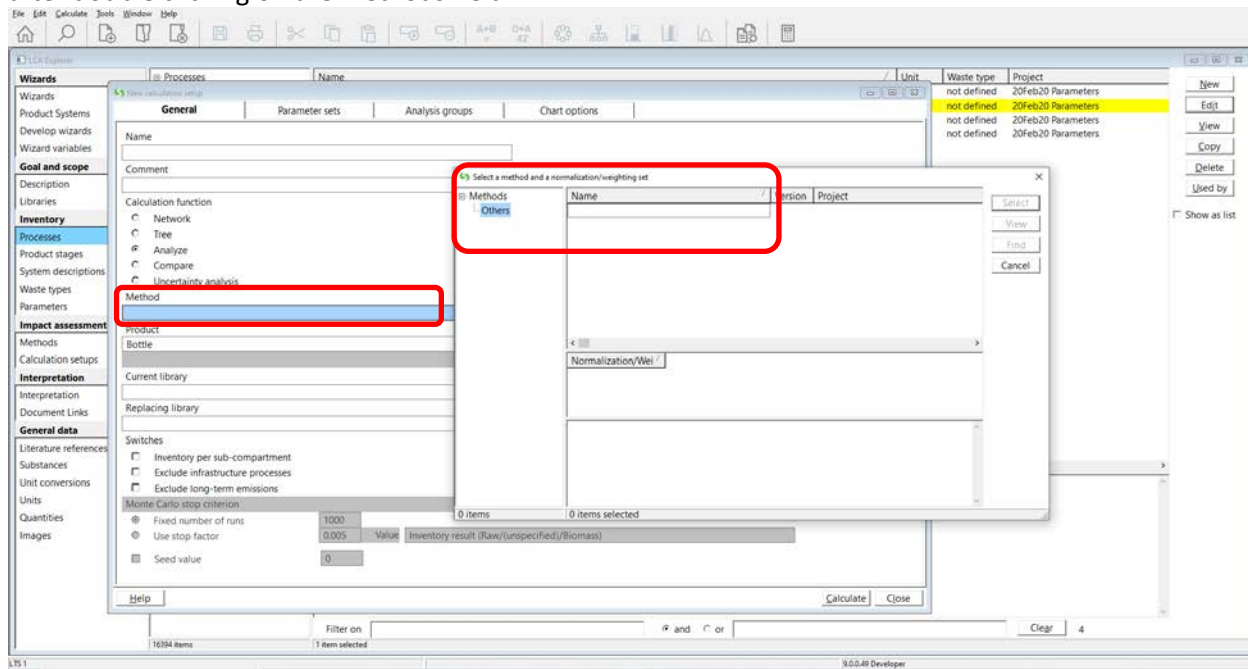
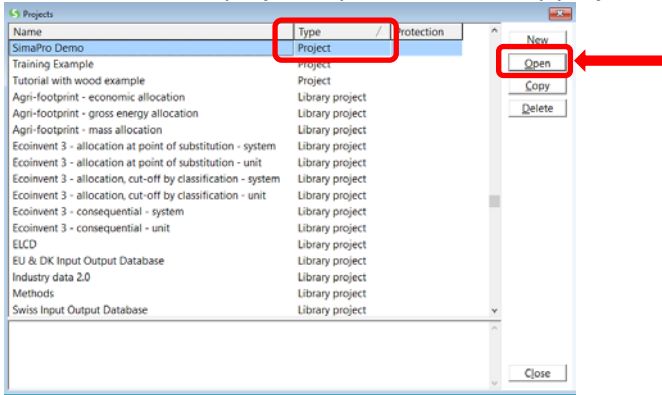


What to do when no impact assessments methods appear in your calculation set-up

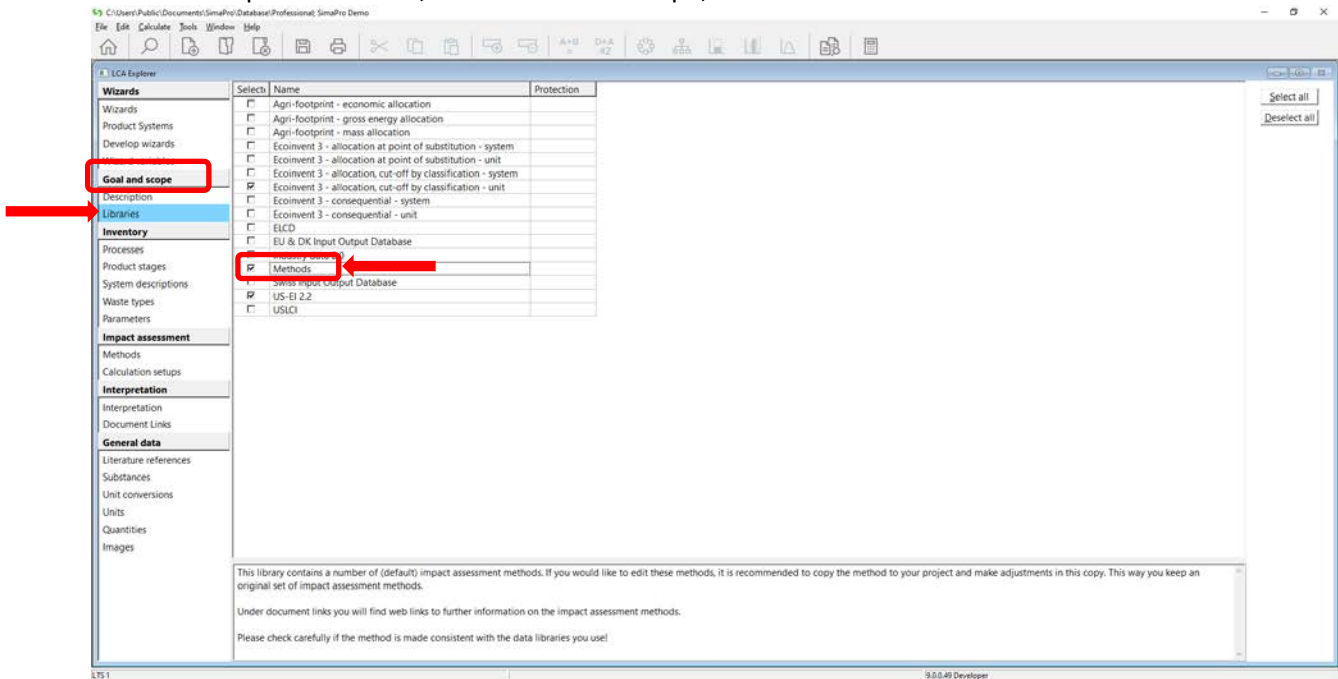
This article will show you what to do when you go to run an analysis, and no impact assessment methods appear after double clicking on the methods field.



1. Be sure to have a 'project' open, not a 'library project' within SimaPro under File/Open Project.



2. In the LCA Explorer window, under 'Goal and scope,' click 'Libraries' and select the 'Methods' box.



- Now when you go back to your calculation set-up and double click in the method field, all of the impact assessment methods that come with SimaPro will appear.

